

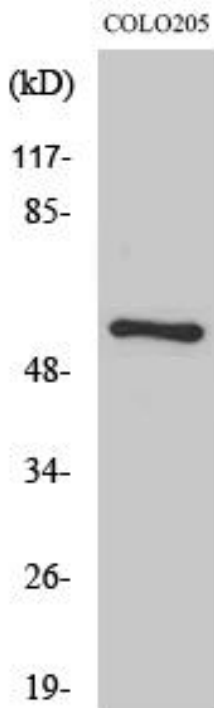


FBP3 Polyclonal Antibody

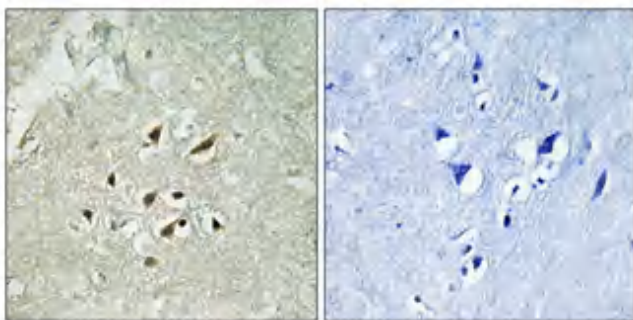
Catalog No	YP-Ab-01708
Isotype	IgG
Reactivity	Human;Mouse;Rat
Applications	WB;IHC;IF;ELISA
Gene Name	FUBP3
Protein Name	Far upstream element-binding protein 3
Immunogen	The antiserum was produced against synthesized peptide derived from human FUBP3. AA range:201-250
Specificity	FBP3 Polyclonal Antibody detects endogenous levels of FBP3 protein.
Formulation	Liquid in PBS containing 50% glycerol, 0.5% BSA and 0.02% sodium azide.
Source	Polyclonal, Rabbit,IgG
Purification	The antibody was affinity-purified from rabbit antiserum by affinity-chromatography using epitope-specific immunogen.
Dilution	WB: 1/500 - 1/2000. IHC: 1/100 - 1/300. ELISA: 1/20000.. IF 1:50-200
Concentration	1 mg/ml
Purity	≥90%
Storage Stability	-20°C/1 year
Synonyms	FUBP3; FBP3; Far upstream element-binding protein 3; FUSE-binding protein 3
Observed Band	60kD
Cell Pathway	Nucleus .
Tissue Specificity	Detected in a number of cell lines.
Function	function:May interact with single-stranded DNA from the far-upstream element (FUSE). May activate gene expression.,PTM:Phosphorylated upon DNA damage, probably by ATM or ATR.,similarity:Contains 4 KH domains.,tissue specificity:Detected in a number of cell lines.,
Background	function:May interact with single-stranded DNA from the far-upstream element (FUSE). May activate gene expression.,PTM:Phosphorylated upon DNA damage, probably by ATM or ATR.,similarity:Contains 4 KH domains.,tissue specificity:Detected in a number of cell lines.,
matters needing attention	Avoid repeated freezing and thawing!
Usage suggestions	This product can be used in immunological reaction related experiments. For more information, please consult technical personnel.



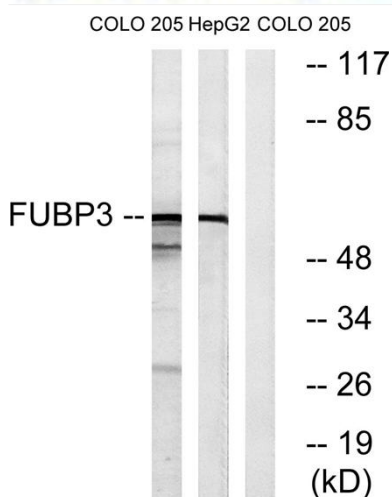
Products Images



Western Blot analysis of various cells using FBP3 Polyclonal Antibody cells nucleus extracted by Minute TM Cytoplasmic and Nuclear Fractionation kit (SC-003, Inventbiotech, MN, USA).



Immunohistochemical analysis of paraffin-embedded Human brain. Antibody was diluted at 1:100(4° overnight). High-pressure and temperature Tris-EDTA, pH8.0 was used for antigen retrieval. Negative control (right) obtained from antibody was pre-absorbed by immunogen peptide.



Western blot analysis of lysates from COLO and HepG2 cells, using FUBP3 Antibody. The lane on the right is blocked with the synthesized peptide.